



TAXI L

0UM10263



DESCRIPTION

Pullover safety shoes, comfortable U-Power from the Concept M range/assortment, with water-repellent natural nubuck leather upper, Composite toe cap, stainless steel anti-puncture, breathability, slip resistant and PU/PU sole.

UPPER

Natural nubuck leather, water repellent

LINING

Wingtex® breathable ariatunnel

TOECAP

AirToe Composite

ANTIPERFORATION

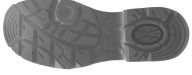
Classic stainless steel

MIDSOLE

Action Dry, anatomical with open cell fabric, breathable, antifungal and defatiguing

SOLE/TREAD

Compact PU anti-abrasion, anti-oil, anti-slip and anti-static



ANATOMICAL INSOLE

Natural Confort 11 Mondopoint

AIRTOE COMPOSITE TOECAP

Airtoe Composite Toecap. A versatile solution made from a completely metal-free composite material. Weighing approximately 50 grams, it offers excellent thermal insulation and a lightweight design suitable for prolonged use in a variety of working environments.

ACTION DRY

Anti-fatigue anatomical footbed combining an EVA support with an open-cell fabric. The structure is designed to be lightweight, non-slip, antifungal, and highly breathable, keeping the foot dry and ensuring stability even in demanding working conditions.

PROTECTION CLASS

S3 FO SR

EU NORM

EN ISO 20345:2022

SIZES

38-47

TECHNOLOGIES

